

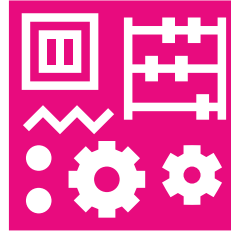
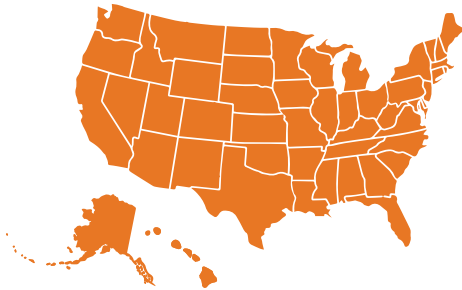
“By the Numbers”



Standardization/Norms

272
Examiners

44
participating US
states and D.C.



1700

children completed the
Cognitive, Language
and Motor Scale
standardization edition



17 age
groups

100 in each
age group

320

children were
administered
the Social-
Emotional Scale



8
age groups

40
in each
age group

750

children were
included in the
Adaptive
Behaviour Scale
normative sample
during the
Vineland™-3
standardization



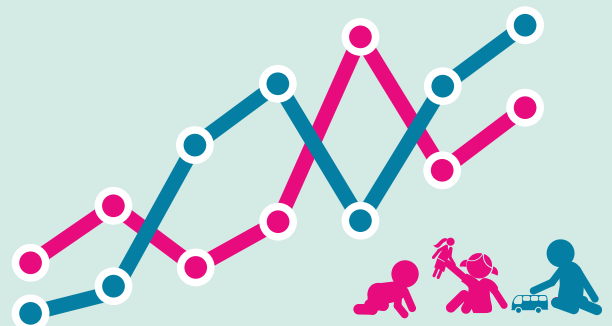
9
age groups

80-90
in each
age group



Scores Available

- Scaled Scores
- Standard Scores
- Percentile Ranks
- Confidence Intervals
- Age Equivalents
- Growth Scale Values—with statistical significance
- Discrepancy Analysis—with statistical significance
- Guidance to determine Percent Delay





Reliability

All measures reflect a high degree of reliability in the items, and that the Bayley-4 scales are equally reliable for assessing individuals with different levels of development or individuals with different clinical diagnoses.

	Cognitive, Language and Motor Sub-tests	Cognitive, Language & Motor Composites	Special Group Studies	Social-Emotional	Adaptive Behaviour
Internal Consistency	.93 to .95	.95 to .96	.97 to .99	.85 to .91	.91 to .98
Test-Retest	.81 to .84	.81 to .85			.72 to .87
Inter-Rater					.67 to .81



Validity

Correlations/Relationships with Other Measures:

- Bayley-III
- WPPSI®-IV*
- PDMS-2
- Information regarding the relation between the Bayley-III and the PLS™-4 and the Bayley-III and the Vineland™-3 is also provided.



Special Group Studies:

- Autism spectrum disorder
- Developmental delay
- Down syndrome
- Language delay and specific language impairment
- Moderate/late premature and very/extreme premature
- Motor impairment
- Prenatal drug/alcohol exposure

412

children were included in the special group studies



Classification Accuracy was used in comparing appropriate groups with typically developing peers as measured by the area under the ROC curve. ROC area estimates range from .50 (chance accuracy) to 1.00 (perfect accuracy). Traditional benchmarks suggest that values greater than or equal to .90 are excellent, .80-.89 are good, .70-.79 are fair, and less than .70 are poor.

	Developmental Delay	Language Delay	Specific Language Impairment	Motor Impairment
Classification accuracy of the Cognitive, Language and Motor Scales	.82	.89 (excludes Motor Scale)		
Individual Scales		.86	.80	.90

*Correlations reported refer to US-version of WPPSI-IV

The Bayley-4 Administration and Technical Manuals include references, detail, and full information on all these data points.

1-866-335-8418 | PearsonClinical.ca

Copyright ©2019 Pearson Education, Inc. All rights reserved. Pearson, Bayley, PLS, Vineland, and WPPSI are trademarks, in the US and/or other countries of Pearson Education, plc.

