



Pearson



Resource Guide *for* **Healthcare**

2023 Canadian Edition



**NEW Mental Health Resource Centre
Powered by Pearson Assessments**

Bringing Supportive Mental Health Tools to You

Our world is changing rapidly, with new reports and research. We know there is a growing number of people struggling with mental or physical issues. Anxiety, depression, and stress are more prevalent than ever before, with record numbers displaying clinical signs of anxiety, depression, or both since the onslaught of COVID-19. There's an urgent need for mental health support and we're committed to making sure you've got the most reliable tools at your disposal.

EXPLORE MORE

866-335-8418 | PearsonClinical.ca

Copyright © 2023 Pearson Education, Inc. or its affiliates. All rights reserved. Pearson, and BECK are trademarks, in the U.S. and/or other countries, of Pearson plc. MMPI is a trademark of the Regents of the University of Minnesota. Millon is a registered trademark of DICANDRIEN, INC.



Featured Mental Health and Anxiety Tools

MMPI³

 **MACI^{II}**

BECK

**BROWN
EF/A
SCALES**

See our solutions at
[**PearsonClinical.ca/MentalHealth**](https://PearsonClinical.ca/MentalHealth)

Table of Contents

This guide highlights some of our most popular solutions. Be sure to check out our website for more products and detailed information.



Assessments

Memory	4
Cognitive	6
Executive Function.	8
Personality.	10
Depression & Anxiety	14
Medical.	16
Behaviour	17
Sensory & Motor	18
Development	18
Achievement.	19

Resources

Solution Finder	2
Digital	9
Ordering	20



Visit [PearsonClinical.ca](https://www.pearsonclinical.ca) for complete product details, pricing, sample reports, and much more.

Featured Topics

- [Qualification information](#)
- [Field research opportunities](#)
- [Permissions and licensing](#)
- [Webinars](#)

Featured Products

We've updated a number of our tools to help you diagnose and support your clients. You can get details on these new products in this guide:

- WRAML™3
- D-REF Adult
- Everyday Memory Survey
- MMPI®-3
- MACI®-II
- PEDI-CAT

NEW  **BBCS-4:R & BSRA-4**

Memory

As the basis for learning at any age, and a barometer for our ability to live independently as we get older, memory is a critical skill throughout our lives. These tools assess multiple factors affecting memory, and provide reliable information on short and long-term memory functions in children and adults.



WMS®-IV

Wechsler® Memory Scale, Fourth Edition is the most widely used scale of adult memory. In response to changing demographics, increased caseload, and new research and clinical needs, this latest edition of the memory test includes four new subtests and modifications to three existing subtests. This edition was co-normed with the WAIS®-IV.



ACS & ACS Social Cognition

Advanced Clinical Solutions for the WAIS®-IV and WMS®-IV enhances the clinical utility and expands the construct coverage of these respected tests. The ACS tool provides a common and related sample linking WAIS-IV, WMS-IV, estimated premorbid intellectual functioning, executive function, social cognition, and daily living.



CVLT®3

California Verbal Learning Test®, Third Edition is the most comprehensive assessment of verbal learning and memory for older adolescents and adults. In the CVLT3, an examinee listens to a series of words and is then asked to recall the terms and the category to which they belong.



CVLT®-C

The CVLT® – Children's Version is used to assess verbal learning and memory in children and adolescents. Useful in various settings to identify learning and memory difficulties, isolate deficient learning strategies, and assist in designing remediation programs.





WR WRAML™ 3

The Wide Range™ Assessment of Memory and Learning, Third Edition measures short- and long-term memory functioning and the ability to learn new material in children and adults. This engaging lifespan assessment includes updated norms, content, and artwork reflective of today's population.

Key Benefits

- Enhanced items and structure that simplify administration
- New items measure delayed recall
- Content relevant for adult populations
- Updated norms and artwork reflective of our diverse population



5-90



10-120 min



C



Visit PearsonClinical.ca/wraml3 for more details.

Everyday Memory Survey

Declining memory function is one of the most common complaints among individuals as they age, and it can be difficult for practitioners and medical professionals to determine whether it's due to cognitive impairment or developmentally normative declines in memory. The Everyday Memory Survey allows practitioners and medical professions to screen for individual memory-related behaviors in daily life to determine if further testing or a referral is needed. *It is the only adult memory screener with the comprehensive normative data needed to determine next steps.*



18-90



10 min



B

NEPSY®-II

The NEPSY®, Second Edition is the only single measure that allows clinicians to create tailored assessments across six domains, specific to a child's situation. NEPSY-II results provide information relating to typical childhood disorders, enabling accurate diagnosis and intervention planning for success in school and at home.



3-16



Varies



C

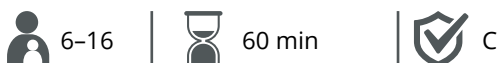
Cognitive

Need a reliable intelligence test? Or maybe you need to gauge daily living skills for an adult with declining cognitive ability. Whatever your cognition testing needs are, chances are we have a solution to help! These tools provide reliable data on a person's information processing skills such as speed, memory and storage, retrieval of information, reasoning abilities, and problem solving.



WISC®-V-CDN

Wechsler® Intelligence Scale for Children, Fifth Edition: Canadian measures a child's intellectual ability across five cognitive domains. The WISC-V gives school psychologists, clinical psychologists, and neuropsychologists unparalleled flexibility and interpretive power to gain a broad view of cognitive ability.



WAIS®-IV-CDN

The Wechsler® Adult Intelligence Scale, Fourth Edition: Canadian is the most advanced adult measure of cognitive ability and is based on recent research in the area of cognitive neuroscience. WAIS-IV includes 10 subtests that focus on four domains of intelligence: verbal comprehension, perceptual reasoning, working memory, and processing speed.



WPPSI®-IV-CDN

Rooted in contemporary theory and research, Wechsler® Preschool & Primary Scale of Intelligence, Fourth Edition: Canadian is an innovative measure of cognitive development for young children. Reporting includes a summary of the child's background, test behaviors, interpretation of scores, recommendations, and optional parent report.



BBCS-4:R & BSRA-4

Measure a child's school readiness by assessing concept development in up to ten domains in a systematic, valid, and reliable way. Concept acquisition is directly related to early childhood educational standards, understanding directions, early language arts and STEM achievement, and overall cognitive and language development.



RBANS® Update

The RBANS® Update is a brief battery to assess cognitive decline or neurocognitive status in the following domains: Immediate Memory, Visuospatial/Constructional, Attention, Language, and Delayed Memory.

 12–89

 30 min

 B

AM-PAC®

The AM-PAC® is a comprehensive and precise point-of-care assessment of patient-related functional outcomes for settings where acute and/or post acute care is being provided.

 18+

 5 min

 A

BCSE & TFLS

Evaluate cognitive functioning in patients with dementia, mild MR, TBI, or Alzheimer's with the Brief Cognitive Status Exam, and administer the Texas Functional Living Scale screening tool to help identify the level of care an individual requires.

 17–90

 15–30 min

 B

TOPE

The Test of Premorbid Functioning enables clinicians to estimate an individual's level of cognitive and memory functioning before the onset of injury or illness.

 16–90

 Less than 10 min

 C

CLQT+

The Cognitive Linguistic Quick Test quickly obtains severity ratings for five primary domains of cognition in English or Spanish-speaking adults with known or suspected neurological impairment.

 18–89

 15–30 min

 B

Cogmed

Using innovative computer game design Cogmed provides an evidence-based program to improve attention and focus. Cognitive neuroscience and close professional support enable Cogmed to deliver substantial and lasting benefits.

 4+

 B

Executive Function

These tools measure a person's ability to organize, focus, prepare, monitor, and modify their approach to problem solving and regulating their behaviour.



D-KEFS™

The Delis-Kaplan Executive Function System™ evaluates higher level cognitive functions in both children and adults. It can help determine how executive functions affect work and school performance with nine subtests that help provide a comprehensive evaluation.



8-89



90 min



C



Brown EF/A Scales™

Go beyond other measures to screen and assess a wider range of impairments of executive functioning and attention, giving you a much better platform from which to make treatment decisions. Scales provide a comprehensive evaluation of an individual's ADHD symptoms by analyzing their behaviour using multiple perspectives: the examinee's self-perspective, the teacher's perspective, and the parents' perspective.



3+



10-25 min



B



D-REF

Delis-Rating of Executive Function lets clinicians quickly report the frequency of observed behaviors that identify executive function problems in children and adolescents, such as ADHD-Combined, ADHD-Inattentive, Traumatic Brain Injury, Autism/Asperger's Syndrome, neurological/psychiatric disorders, and learning disabilities.



5-18



5-10 min



B



[Learn more](#)



What could you do with 40% of your time back?

The digital assessment workflow doesn't simply make the administration of an assessment less time-consuming, it also speeds up and improves the accuracy of the scoring and reporting process. It will literally transform the way you work and increase your efficiency, giving you back valuable time in your day — time you can spend doing what you're called to do — helping people make the most of their lives!

Q-interactive

Q-interactive® is a 1:1 iPad®-based testing system that helps administer, score, and report 20 different clinical assessments, including WISC®-V, WAIS®-IV, WMS®-IV, CVLT, RBANS, and more. With Q-interactive, you can create personalized batteries at both the instrument and subtest levels that are proven to:

- Better serve your clients and evolve your practice
- Minimize time spent on administering tests
- Streamline workflow and reduce manual data entry

Q-global

Q-global® allows clinicians to quickly and efficiently administer assessments, generate scores, and produce reports. Q-global houses many of our industry-leading assessment tools and is accessible from any internet-connected device at any time, in any location. More than 60 assessments are available on Q-global, including MMPI®-3, MACI®-II, BASC™-3, and Vineland™-3.

Q-global Video Proctoring

Get the convenience and confidence of face-to-face conversation and administration— all within your normal Q-global workflow. You can easily assign one of 40+ assessments and proctor “in person” via video without juggling a third-party platform.



Personality

Get insights toward clinical diagnoses and treatment for a variety of disorders by measuring personality traits. Our assessments are regularly used for psychotherapy, forensic evaluations, pre-employment evaluations, presurgical evaluations, college counseling programs, substance abuse programs, and criminal justice/corrections.

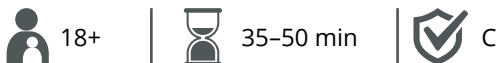


MMPI 2 RF

Minnesota Multiphasic
Personality Inventory-2
Restructured Form*

MMPI-2-RF®

Published in 2008, the Minnesota Multiphasic Personality Inventory-2-Restructured Form® provides a shorter, psychometrically improved, clinically effective version of the test. The MMPI-2-RF relies on the MMPI-2 normative sample, which was collected in the late-1980s.



MMPI-2 Minnesota Multiphasic Personality Inventory-2

MMPI®-2

Used by clinicians to assist with the diagnosis of mental disorders and the selection of appropriate treatment methods, the Minnesota Multiphasic Personality Inventory-2 has supported clinicians since its publication in 1989.

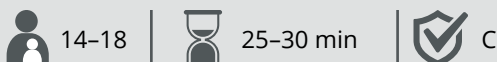


MMPI A RF

Minnesota Multiphasic
Personality Inventory-Adolescent
Restructured Form™

MMPI-A-RF®

The Minnesota Multiphasic Personality Inventory-Adolescent-Restructured Form™ is the most up-to-date adolescent version of the MMPI. The MMPI-A-RF includes several adolescent-specific scales to support diagnosis and treatment planning in a variety of settings.



MMPI-A Minnesota Multiphasic Personality Inventory-ADOLESCENT

MMPI®-A

The Minnesota Multiphasic Personality Inventory®-Adolescent, published in 1992, provides an empirically based measure of adolescent psychopathology with age-specific scales and tailored reports.



A New Norm

with updated items, scales, and
normative samples



The MMPI[®]-3 is the most up-to-date personality assessment available for mental health, medical, forensic, and public safety settings. The test is modernized for today's clients and provides new norms and updated items and scales. The MMPI-3 continues to build on the history and strengths of the MMPI instruments to provide an empirically validated, psychometrically relevant standard for psychological assessment.



18+



35-50 min



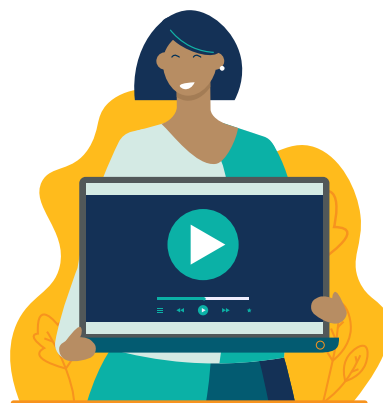
C

**LEARN
MORE**

Get more details on the MMPI-3 at PearsonClinical.ca/MMPI-3

Get an overview of the MMPI-3

Watch this short video to [learn more](#) about the updated items, scales, and normative samples.



Increase your knowledge of the MMPI-3

With a variety of [training](#) opportunities!



Expanded MMPI-3 report offerings for public safety settings:

- **NEW!** Firefighter Candidate Interpretive Report
- **NEW!** Dispatcher Candidate Interpretive Report
- **NEW!** Correctional Candidate Interpretive Report
- **UPDATED!** Police Candidate Interpretive Report



**Developed for teens.
Updated for today.**



Brief and easy to administer, the Millon® Adolescent Clinical Inventory, Second Edition (MACI®-II) keeps the challenges of today's youth in mind to assess personality patterns, expressed concerns, and clinical symptoms. Today's youth are living in a world that's "bigger" than ever. Face it together with MACI-II.

Key features

- Revised test items and several new scales including:
 - Disruptive Mood Dysregulation
 - Post-Traumatic Stress
 - Reality Distortions
- Scales: 11 Personality Patterns, 4 Expressed Concerns, 9 Clinical Syndromes, 33 Grossman Facets
- Diagnostic considerations reflecting *DSM-5* criteria
- Interpretive and Profile Reports for males, females, and a gender neutral option
- Revised Treatment Guide to reflect empirically supported therapeutic approaches



13-18



20-25 min



C



Get 20/20 insight for the unique issues teens face at
PearsonClinical.ca/MACI-II

MCMI-IV®

The Millon® Clinical Multiaxial Inventory-IV comprehensively identifies the level of an adult's emotional, behavioral, or interpersonal functioning. Used in multiple settings including therapeutic, medical, government, and forensics, MCMI-IV insights help you identify deeper clinical issues, better equipping you to build a therapeutic alliance and make better treatment decisions. Based on Dr. Theodore Millon's Evolutionary Theory, its interpretive reports provide an in-depth analysis of



MCMI®-IV

MILLON® CLINICAL
MULTIAXIAL INVENTORY-IV
by Theodore Millon, PhD, DSc, with Seth Grossman, PsyD,
and Carrie Millon, PhD

personality patterns and symptom dynamics, and include suggestions for therapeutic management.



18+



25-30 min



C



MAPI®

MILLON® ADOLESCENT
PERSONALITY INVENTORY
by Theodore Millon, PhD, DSc, Catherine J. Green, PhD,
and Robert B. Meagher, Jr., PhD

MAPI®

Suitable for a range of mental health and guidance professionals in various settings, the Millon® Adolescent Personality Inventory assesses personality styles, expressed concerns, and behavioral correlates.



13–18



20–30 min



C



M-PACI®

MILLON® PRE-ADOLESCENT
CLINICAL INVENTORY
by Theodore Millon, PhD, DSc, Robert Tringone, PhD,
Carrie Millon, PhD, and Seth Grossman, PsyD

M-PACI®

Millon® Pre-Adolescent Clinical Inventory identifies emerging personality styles and current clinical signs faced by today's children, and helps the clinician understand what is preventing them from thriving.



9–12



15–20 min



C



MCCI®

MILLON® COLLEGE
COUNSELING INVENTORY
by Theodore Millon, PhD, DSc, Stephen N. Strack, PhD,
Carrie Millon, PhD, and Seth Grossman, PsyD

MCCI®

The Millon® College Counseling Inventory (MCCI®) is a multi-dimensional personality assessment that can help address struggling students' concerns and get them back to a healthy state of mind.



16–40



20–25 min



B



MIPS® REVISED

MILLON® INDEX OF
PERSONALITY STYLES REVISED
by Theodore Millon, PhD, DSc

MIPS® Revised

The Millon® Index of Personality Styles, Revised assesses normally functioning adults who are experiencing work, family, or social relationship difficulties. It can be used in both counseling and employment settings.



18+



25–30 min



B

MBMD®

The Millon® Behavioral Medicine Diagnostic is an assessment of psychosocial factors that may support or interfere with a medical patient's course of treatment. Brief yet comprehensive, the inventory includes three norm groups (General Medical, Pain, and Bariatric patients) and 165 items to help gather a range of information that might otherwise require a battery of instruments to obtain. Interpretive and Profile Reports are also available.



MBMD®

MILLON® BEHAVIORAL
MEDICINE DIAGNOSTIC
by Theodore Millon, PhD, DSc, Michael Antoni, PhD,
Carrie Millon, PhD, Sarah Minor, PhD, and Seth Grossman, PsyD



18–85



20–25 min



C

Depression & Anxiety

There's a growing need for mental health support and we're committed to making sure you've got the most reliable tools at your disposal. These assessments for depression, anxiety, and related conditions can be used throughout the entire treatment cycle, from identifying concerns to measuring outcomes. They are brief but thorough, and can be used in a variety of settings from counseling to hospitals.



BDI®-2

Beck Depression Inventory®-2 is a brief, criteria-referenced assessment for measuring depression severity. This edition of the Beck Depression Inventory®, the most widely used instrument for detecting depression, takes just five minutes to complete and is more clinically sensitive than ever. It consists of 21 items to assess the intensity of depression in clinical and non-clinical patients. Each item is a list of four statements arranged in increasing severity about a particular symptom of depression. It can be used in a variety of clinical settings by most Allied Health clinicians.

3 BDI-2

BECK Depression Inventory®



13-80



5 min



B

BAI®

Beck Anxiety Inventory® is a brief, criteria-referenced assessment for measuring anxiety severity and level. With the Beck Anxiety Inventory, patients respond to 21 items rated on a scale from 0 to 3. Each item is descriptive of subjective, somatic, or panic-related symptoms of anxiety. BAI helps assess a broad range of emotional, physical, cognitive, and behavioral symptoms that represent important dimensions of anxiety, and has been found to discriminate

3 BAI

BECK Anxiety Inventory®

well between anxious and non-anxious diagnostic groups. It can be used in a variety of clinical settings by most Allied Health clinicians.



17-80



5 min



B

BECK Hopelessness Scale®

BHS®

Beck Hopelessness Scale® measures attitudes about the future. It can be used in a variety of clinical settings, and can be administered with the BDI®-2 and BSS® for a complete evaluation.



17–80



5 min



B

BECK Scale for Suicide Ideation®

BSS®

Beck Scale for Suicide Ideation® is an evaluation that helps measure a broad spectrum of attitudes and behaviors clinicians routinely consider when assessing a patient's suicide risk.



17–80



5 min



B

BYI-2™

The Beck Youth Inventories™, Second Edition uses five self-report inventories to assess symptoms of depression, anxiety, anger, disruptive behaviour, and self-concept in children and adolescents. Each inventory (Depression, Anxiety, Anger, Disruptive Behaviour, and Self-Concept) contain 20 questions about thoughts, feelings, and behaviors associated with emotional and social impairment in youth. Children and adolescents describe how frequently the statement has been

BECK Youth Inventories™ – Second Edition

true
for them during the past two weeks, including today.



7–18



5 min each



B

MASC™-2

Multidimensional Anxiety Scale for Children™, Second Edition assesses a youth's symptoms of anxiety to distinguish between important symptoms and dimensions that broadband measures do not capture.



8–19



15 min



B

CTQ

Childhood Trauma Questionnaire reliably screens for a history of child abuse and neglect. This self-report tool is useful with individuals referred for a broad range of psychiatric symptoms.



12+



5 min



B



There's more to explore!

For pricing, ordering, additional products and more information.
Visit [PearsonClinical.ca](https://www.pearsonclinical.ca)

Medical



Medical conditions and mental health are often connected, and it's important to look at a variety of biopsychosocial factors before designing treatment plans.

Our health psychology tests are used to identify the psychological, behavioral, and emotional factors that could impact a patient's response to medical care.

They are also used as reliable predictors of positive treatment outcomes for many procedures, such as gastric bypass and spinal cord stimulation surgery.

BHI™-2

Battery for Health Improvement™ 2 presents concise, coordinated assessment and evidence-based treatment guidelines for biopsychosocial issues most relevant in evaluating patients with injuries.



18-65



30 min



B

BBHI™-2

Brief Battery for Health Improvement™ 2 quickly assesses physical symptoms and psychological, environmental, and social factors that can impact a patient's response to a normal course of treatment.



18-65



7-10 min



B

P-3®

Easily and inexpensively measure pre- and post-treatment pain status to evaluate treatment effectiveness, monitor outcomes, and provide objective feedback if further assessment is needed.



17-76



15 min



B

SCL-90-R®

Symptom Checklist-90-Revised® helps evaluate a broad range of psychological problems and symptoms of psychopathology. It is also useful in measuring patient progress or treatment outcomes.



13+



12-15 min



B

BSI®

The efficient Brief Symptom Inventory® provides patient-reported data to support clinical decision-making at intake and during the course of treatment in a variety of settings.



13+



8-10 min



B

BSI® 18

A shortened form of the BSI, the Brief Symptom Inventory® 18 gathers patient-reported data to measure psychological distress and psychiatric disorders in medical and community populations.



18+



4 min



B



Our personality assessments are also frequently used in medical settings and can be found on pages 10-13.

Behaviour

Like birds of a feather, behaviour and school success often go together. Frequently, the reason behind a child's actions runs deeper than a simple desire to be disruptive, and identifying and treating what lies below the surface can drastically improve academic success and school climate. These assessments are key in helping to identify ADD/ADHD, Autism, Oppositional Defiance Disorder, depression, anxiety, and the multitude of other factors that can affect your students' behaviour.



BASC™-3

The Behaviour Assessment System for Children, Third Edition offers a powerful set of rating scales to help evaluate the behaviours and emotions of preschool through college-age individuals. The BASC-3 differentiates between hyperactivity and attention problems, and measures areas important for both IDEA and *DSM-5* classifications using a triangulation method for gathering information. It analyzes a child's behaviours from three perspectives — self, teacher, and parent — and provides access to extensive reports using computer scoring and interpretation for developing FBAs, BIPs, and IEPs.



Vineland™-3

The Vineland™-3 supports the diagnosis of intellectual and developmental disabilities, and provides valuable information for developing educational and treatment plans. Identify individuals who have intellectual and developmental disabilities, developmental delays, autism spectrum disorders, and other impairments.



TEA-Ch2

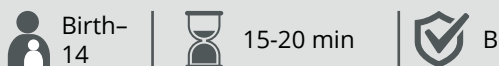
The Test of Everyday Attention for Children, Second Edition uniquely measures separable aspects of attention in a fun and engaging way. It helps differentiate patterns of strengths and weaknesses in cognition, inform appropriate interventions, and monitor outcomes.



Sensory & Motor

Sensory Profile™ 2

The Sensory Profile™ 2 family of assessments provides standardized tools to help evaluate a child's sensory processing patterns in the context of home, school, and community-based activities.



BOT™-2

The Bruininks-Oseretsky Test of Motor Proficiency Second Edition (BOT™-2) delivers the most precise and comprehensive measure of motor skills, both gross and fine. It contains eight subtests and is easy to administer.



Development

As research clearly shows, the steps we take with little ones from birth to age five are critical in fostering success in its many forms, and in shaping lifelong learners. These well-researched assessments help you identify and remediate a wide range of development issues, with game-like activities that make the evaluation enjoyable for those you serve.



Bayley™-4

Bayley™-4 is the most comprehensive assessment tool for determining developmental delays in children. It assesses infant and toddler development across five scales: Cognitive, Language, Motor, Social-Emotional, and Adaptive Behaviour. A digital delivery option is available via Q-global, allowing greater flexibility, ease of use, and improved accuracy.



PEDI-CAT

The Pediatric Evaluation of Disability Inventory Computer Adaptive Test is a computer adaptive caregiver report that measures Daily Activities, Mobility, Social/Cognitive, and Responsibility. It's designed for use with children and youth with a variety of physical and/or behavioral conditions and includes a separate Autism scale.



Achievement

Identifying learning disabilities in children and adults is the first step in getting them the support they need. These tools will give you the reliable and valid information to measure academic skills relative to reading, writing, math, and fluency — and put them on the path to success!



PPVT™-5

The Peabody Picture Vocabulary Test™, Fifth Edition is a norm-referenced and individually administered measure of receptive vocabulary based on words in Standard American English. It directly compares receptive and expressive vocabulary when administered with the EVT-3, and measures progress using the included Growth Scale Values.



EVT™-3

Expressive Vocabulary Test™, Third Edition is an individually administered test of expressive vocabulary and word retrieval. It identifies strengths and weaknesses in the specific domain of semantics and language development, and when administered with the PPVT-5, directly compares receptive and expressive vocabulary.



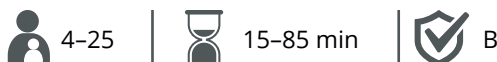
WRAT™5

The Wide Range™ Achievement Test, Fifth Edition helps to identify possible learning disabilities through assessment and monitoring of reading, spelling, and math skills as well as premorbid verbal intelligence in lower functioning patients.



KTEA™-3

Kaufman Test of Educational Achievement, Third Edition gives you tools to gain a deeper understanding of achievement gaps with an easy-to-score assessment that evaluates key academic skills in reading, math, and written/oral language. KTEA-3 also measures progress, allowing you to adjust intervention plans based on performance.





Easy way to order

How to order



Web

The **quickest way to order** is via our website at PearsonClinical.ca



Phone

+1 (866) 335-8418



Purchase orders

Customers purchasing on behalf of an organization with an established account may utilize purchase orders in the website checkout as well as by web form or fax. Learn more: PearsonClinical.ca/PO



Quotes

Create your own quote on our website. Visit PearsonClinical.ca/Quote to get started.



Questions about ordering?

We've got you covered. Visit PearsonClinical.ca/Ordering for helpful hints on:
Account creation, Qualifications, Manual ordering, Purchase orders, Mail-in scoring

Invoices

Find an invoice at PearsonClinical.ca/Invoice

Additional support

Just as there are many ways to order, there are different support options available at: PearsonClinical.ca/Contact

- Read online help articles
- Submit an inquiry to Customer Support
- Call Customer Support: **+1 (866) 335-8418**

Things to remember!

Jot down your **customer account number** for future reference while ordering. You can find this listed on past order confirmations or invoices

Save your **Q-global Inventory Account Number** for ordering. Log into Q-global, then access My Account > Account Information:

Have you heard of the Positive and Negative Syndrome Scale?

The PANSS™ helps measure the positive and negative syndromes of schizophrenia and other psychoses to develop treatment plans.

Learn more at
PearsonClinical.ca/PANSS



Pearson



Connect with us
on social media

866-335-8418 | PearsonClinical.ca

Copyright © 2023 Pearson Education, Inc. or its affiliates. All rights reserved. Pearson is a trademark, in the US and/or other countries, of Pearson plc. MMPI is a registered trademark of the Regents of the University of Minnesota. MCMI, MBMD, MIPS, MCCI, M-PACI, MACI, and MAPI are trademarks and Millon is a registered trademark of DICANDRIEN, INC. WRAML and WRAT are trademarks of Wide Range, Inc. PPVT is a trademark of Wascana Limited Partnership. DSM-5 is a registered trademark of the American Psychiatric Association. MASC-2 is a trademark of Multi-Health Systems Inc (MHS). BSI and SCL-90-R are registered trademarks of Leonard R. Derogotis, PhD. iPad is a registered trademark of Apple, Inc. C5457B SR 06/23