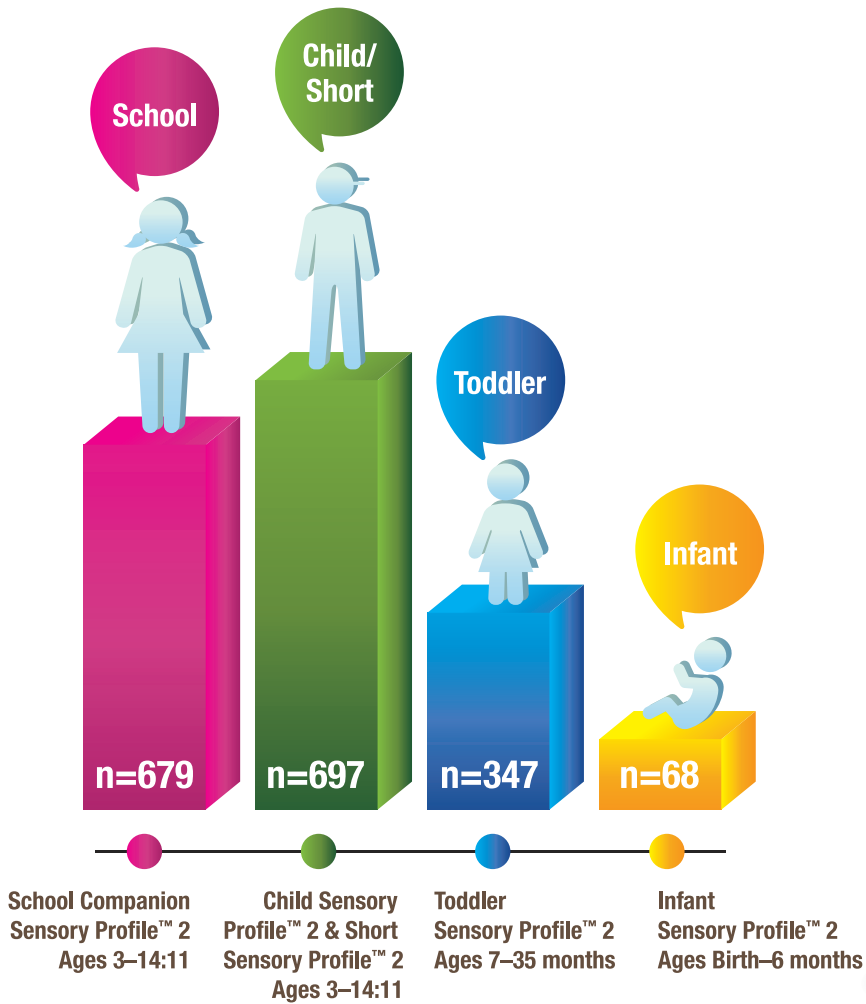


## DEMOGRAPHICS



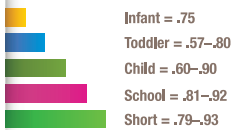
1,791 DEMOGRAPHICALLY REPRESENTATIVE CHILDREN AGES BIRTH THROUGH 14:11



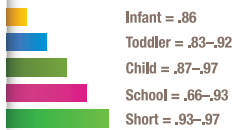
- 337 children rated on both the Child Sensory Profile™ 2 and School Companion Sensory Profile™ 2
- 898 boys and 893 girls
- 10% of standardization sample included children with vulnerable conditions, closely matching their incidence in the general population

## RELIABILITY

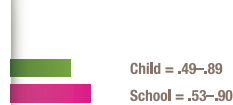
### INTERNAL CONSISTENCY



### TEST-RETEST RELIABILITY



### INTERRATER RELIABILITY



## TECHNICAL SUMMARY

### VALIDITY

#### CLINICAL GROUPS



(n=774 children with vulnerable conditions matched with 774 children without disabilities):

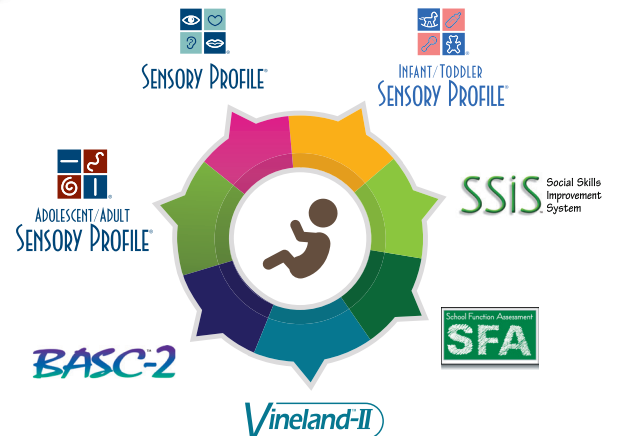
Significant differences between typically developing matched peers and key vulnerable groups:

- Developmental delay and Toddler form
- Autism and Child/Short forms
- Attention deficit/hyperactivity disorder (ADHD) and Child/Short forms
- Dual diagnosis of autism and ADHD and Child/Short forms
- Learning disability and School form



Note: Short Sensory Profile 2 discriminates on a similar pattern to Child Sensory Profile™ 2

### CORRELATION STUDIES WITH OTHER MEASURES



For further information including author podcasts visit [SensoryProfile.ca](http://SensoryProfile.ca)

1-866-335-8418 | PsychCorp | [PearsonClinical.ca](http://PearsonClinical.ca)

Copyright © 2015 Pearson Education, Inc. or its affiliate(s). All rights reserved. BASC, Sensory Profile, SSIS, Vineland, Always Learning, Pearson, design for Pst, and PsychCorp are trademarks, in the U.S. and/or other countries, of Pearson Education, Inc. or its affiliate(s).