



D-KEFS™ Advanced
Delis-Kaplan Executive Function System™ Advanced
Score Report

Name:	DKEFS Sample-Report	Test date:	2025/08/22
Examinee ID:	1234	Report date:	2025/08/22
Birth date:	2017/04/15	Age at testing:	8:4
Gender:	Male	Examiner name:	Examiner 1

Copyright © 2025 NCS Pearson, Inc. All rights reserved.

Warning: This report contains copyrighted material and trade secrets. The qualified licensee may excerpt portions of this output report, limited to the minimum text necessary to accurately describe their significant core conclusions, for incorporation into a written evaluation of the examinee, in accordance with their profession's citation standards, if any. No adaptations, translations, modifications, or special versions may be made of this report without prior written permission from Pearson.

Pearson, Delis-Kaplan Executive Function System, and D-KEFS are trademarks, in the U.S. and/or other countries, of Pearson PLC or its affiliates.

[1.0 / RE1 / QG1]



D-KEFS Advanced Trail Making Test

Core Scores

Within Condition Core Scores

Mean Correct (With Errors) Connection Time

Condition	Raw score	Age scaled score	Age percentile rank
1. Number Sequencing	8.6	3	1
2. Letter Sequencing	4.5	8	25
3. Number–Letter Switching	11.5	6	9

Combined Condition Core and Process Scores

Combined time scores	Sum of scaled scores	Age standard score	Age percentile rank
Combined Sequencing Mean Correct (With Errors) Connection Time Index	11	76	5

Combined error scores	Raw score	Age base rate
Combined Sequencing Total Active Errors (Set-Loss + Sequencing)	2	10–16

Contrast Scores

Score	Score 1	Score 2	Contrast scaled score
Combined Sequencing vs. Number–Letter Switching Mean Correct (With Errors) Connection Time	76	6	8

Core and Process Scores

Within Condition Scores

Condition 1: Number Sequencing

Time scores

Score	Raw score	Age scaled score	Age percentile rank
Mean Correct (With Errors) Connection Time	8.6	3	1
Standard Deviation of Mean Correct (With Errors) Connection Time	8.3		

Error scores

Score	Raw score	Age base rate
Sequencing Errors	1	3–9
Set-Loss Errors	0	26–50
Discontinue Errors	5	≤ 2

Condition 2: Letter Sequencing

Time scores

Score	Raw score	Age scaled score	Age percentile rank
Mean Correct (With Errors) Connection Time	4.5	8	25
Standard Deviation of Mean Correct (With Errors) Connection Time	4.2		

Error scores

Score	Raw score	Age base rate
Sequencing Errors	1	3–9
Set-Loss Errors	0	26–50
Discontinue Errors	0	26–50

Condition 3: Number–Letter Switching

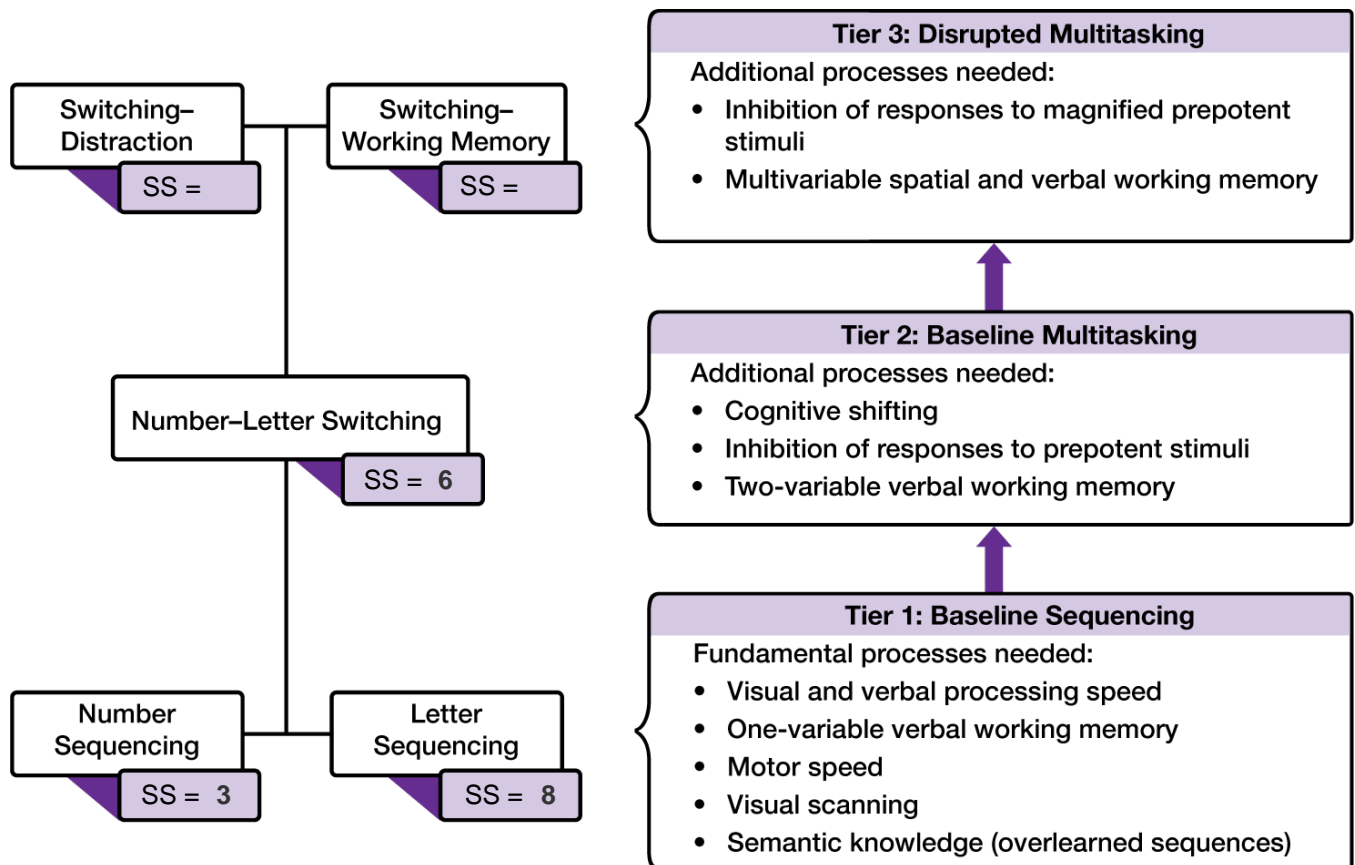
Time scores

Score	Raw score	Age scaled score	Age percentile rank
Mean Correct (With Errors) Connection Time	11.5	6	9
Standard Deviation of Mean Correct (With Errors) Connection Time	6.6		
Mean Pure Response Speed (Correct or Error Connections)	11.5	4	2

Error scores

Score	Raw score	Age base rate
Sequencing Errors	0	51–75
Set-Loss Errors	0	51–75
Discontinue Errors	11	3–9
Percent Error Ratio	0.00	>75

Hierarchical Processes Flowchart



Raw Scores

Error Response Summary

	C1. Number Sequencing	C2. Letter Sequencing	C3. Number–Letter Switching	C4. Switching–Distraction	C5. Switching–Working Memory
Sequencing Errors	1	1	0	-	-
Set-Loss Errors	0	0	0	-	-
Discontinue Errors	5	0	11	-	-
Distraction Errors				-	
Correct Responses	7	12	13	-	-
Total Responses	8	13	13	-	-

D-KEFS Advanced Verbal Fluency Test

Core Scores

Within Condition Core Scores

Accuracy scores

Condition	Raw score	Age scaled score	Age percentile rank
1. Letter Fluency Total Correct	8	6	9
2. Category Fluency Total Correct	11	5	5
3. Switching Fluency Total Correct	7	5	5
4. Switching Fluency Total Accurate Switches	3	5	5

Note. Switching includes two trials of category–letter fluency for ages 8–13 and 70–90 and one trial of category–letter fluency and one trial of letter–category–letter fluency for ages 14–69.

Combined Condition Core Scores

Accuracy scores	Sum of scaled scores	Age standard score	Age percentile rank
Combined Letter and Category Fluency Total Correct Index	11	74	4
Switching Fluency Total Correct/Switching Accuracy Index	10	75	5
Combined Letter, Category, and Switching Fluency Total Correct Index	16	71	3

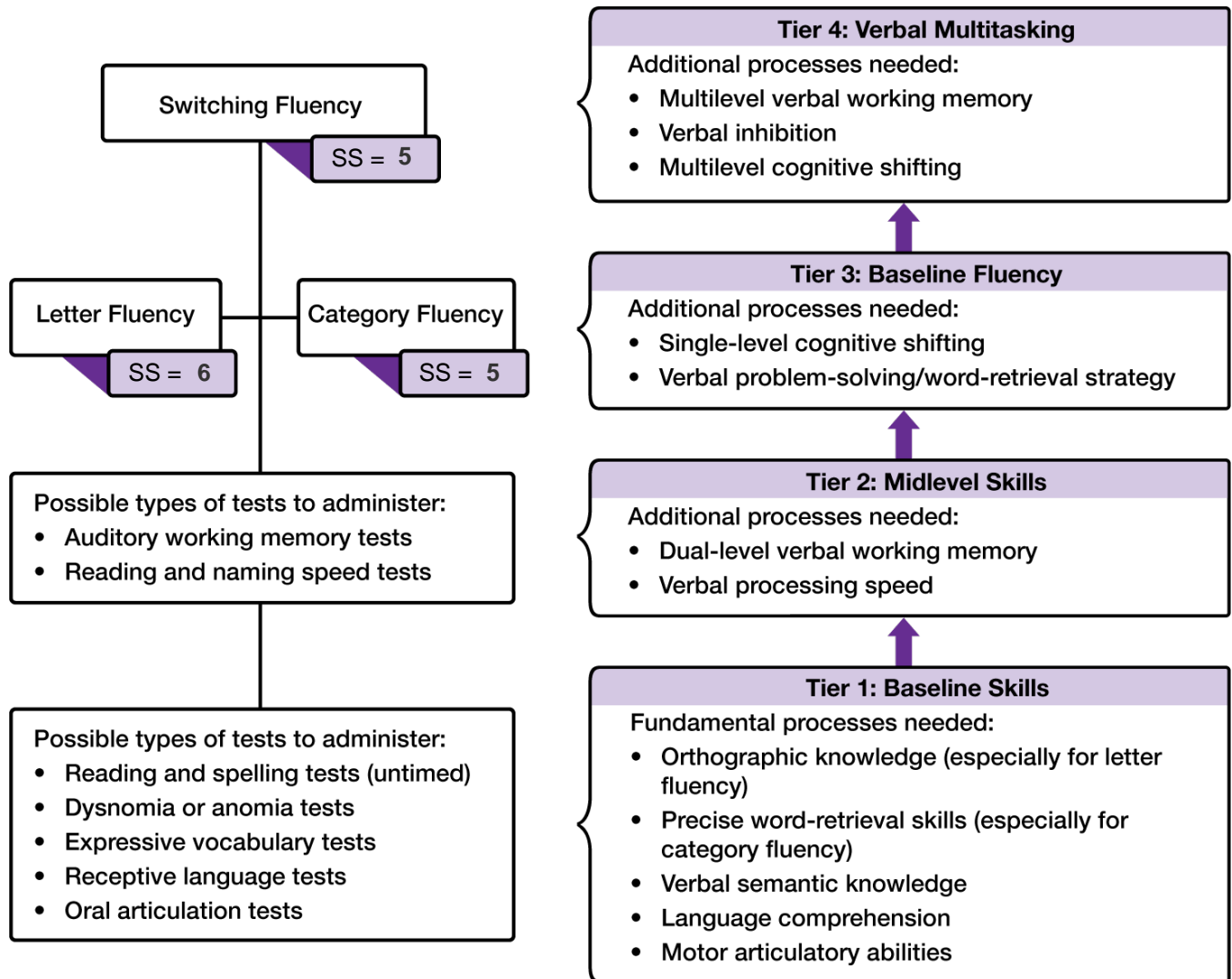
Contrast Scores

Score	Score 1	Score 2	Contrast scaled score
Category Fluency vs. Letter Fluency Total Correct	5	6	8
Combined Letter and Category Fluency vs. Switching Fluency Total Correct/Switching Accuracy Index	74	75	9
Combined Letter and Category Fluency vs. Switching Fluency Total Correct	74	5	8

Process Scores

Error scores	Raw score	Age scaled score	Age percentile rank
Total Set-Loss Errors	19	1	0.1
Total Repetitions	9	1	0.1

Hierarchical Processes Flowchart



Raw Scores

Response Summary by Trial

	Letter Fluency			Category Fluency		Switching Fluency	
	Trial 1	Trial 2	Trial 3	Trial 4	Trial 5	Trial 6	Trial 7*
Total Correct	2	2	4	7	4	4	3
Set-Loss Errors	8	2	4	1	3	0	1
Total Repetitions	3	1	3	2	0	0	0
Total Accurate Switches						1	2
Total Responses	10	5	10	10	7	4	4

Note. Repetition errors can also be set-loss errors.

* Trial 7 differs across age groups.

Scored Item Responses

Letter Fluency: Trial 1

Item number	Response type
1	C
2	SL
3	C
4	SL

Item number	Response type
5	SL
6	SL
7	SLR
8	SL

Item number	Response type
9	SLR
10	SLR

C = correct; R = repetition; SL = set-loss error; SLR = set-loss error repetition

Letter Fluency: Trial 2

Item number	Response type
1	C
2	C
3	R

Item number	Response type
4	SL
5	SL

C = correct; R = repetition; SL = set-loss error; SLR = set-loss error repetition

Letter Fluency: Trial 3

Item number	Response type
1	C
2	C
3	SL
4	R

Item number	Response type
5	C
6	C
7	SL
8	SL

Item number	Response type
9	R
10	SLR

C = correct; R = repetition; SL = set-loss error; SLR = set-loss error repetition

Category Fluency: Trial 4

Item number	Response type
1	SL
2	C
3	C
4	C

Item number	Response type
5	C
6	R
7	C
8	R

Item number	Response type
9	C
10	C

C = correct; R = repetition; SL = set-loss error; SLR = set-loss error repetition

Category Fluency: Trial 5

Item number	Response type
1	C
2	SL
3	SL

Item number	Response type
4	C
5	C
6	SL

Item number	Response type
7	C

C = correct; R = repetition; SL = set-loss error; SLR = set-loss error repetition

Category–Letter Switching: Trial 6

Item number	Response type
1	C
2	C

Item number	Response type
3	C
4	C

C = correct; R = repetition; SL = set-loss error; SLR = set-loss error repetition

Category–Letter Switching: Trial 7*

Item number	Response type
1	C
2	C

Item number	Response type
3	C
4	SL

C = correct; R = repetition; SL = set-loss error; SLR = set-loss error repetition

D-KEFS Advanced Color–Word Interference Test

Core Scores

Within Condition Core Scores

Net Correct Responses

Condition	Raw score	Age scaled score	Age percentile rank
1. Color Identification	33	5	5
2. Word Identification	31	5	5
3. Inhibition	60	10	50

Combined Condition Core Scores

Combined accuracy scores	Sum of scaled scores	Age standard score	Age percentile rank
Combined Color and Word Identification Net Correct Responses Index	10	74	4

Combined error scores	Raw score	Age scaled score	Age percentile rank/base rate
Combined Color and Word Identification Total Errors	12		3–9

Contrast Scores

Score	Score 1	Score 2	Contrast scaled score
Combined Identification vs. Inhibition Net Correct Responses	74	10	16

Core and Process Scores

Within Condition Scores

Condition 1: Color Identification

Accuracy score	Raw score	Age scaled score	Age percentile rank
Net Correct Responses	33	5	5
Time scores	Raw score	Age base rate	
Mean Pure Response Time (Correct and Incorrect)	1.4		
Standard Deviation of Mean Pure Response Time (Correct and Incorrect)	0.5	26–50	

Condition 2: Word Identification

Accuracy score	Raw score	Age scaled score	Age percentile rank
Net Correct Responses	31	5	5
Time scores	Raw score	Age base rate	
Mean Pure Response Time (Correct and Incorrect)	1.3		
Standard Deviation of Mean Pure Response Time (Correct and Incorrect)	0.3	51–75	

Condition 3: Inhibition

Accuracy scores	Raw score	Age scaled score	Age percentile rank/ base rate
Net Correct Responses	60	10	50
Percent Error Ratio	3		51–75

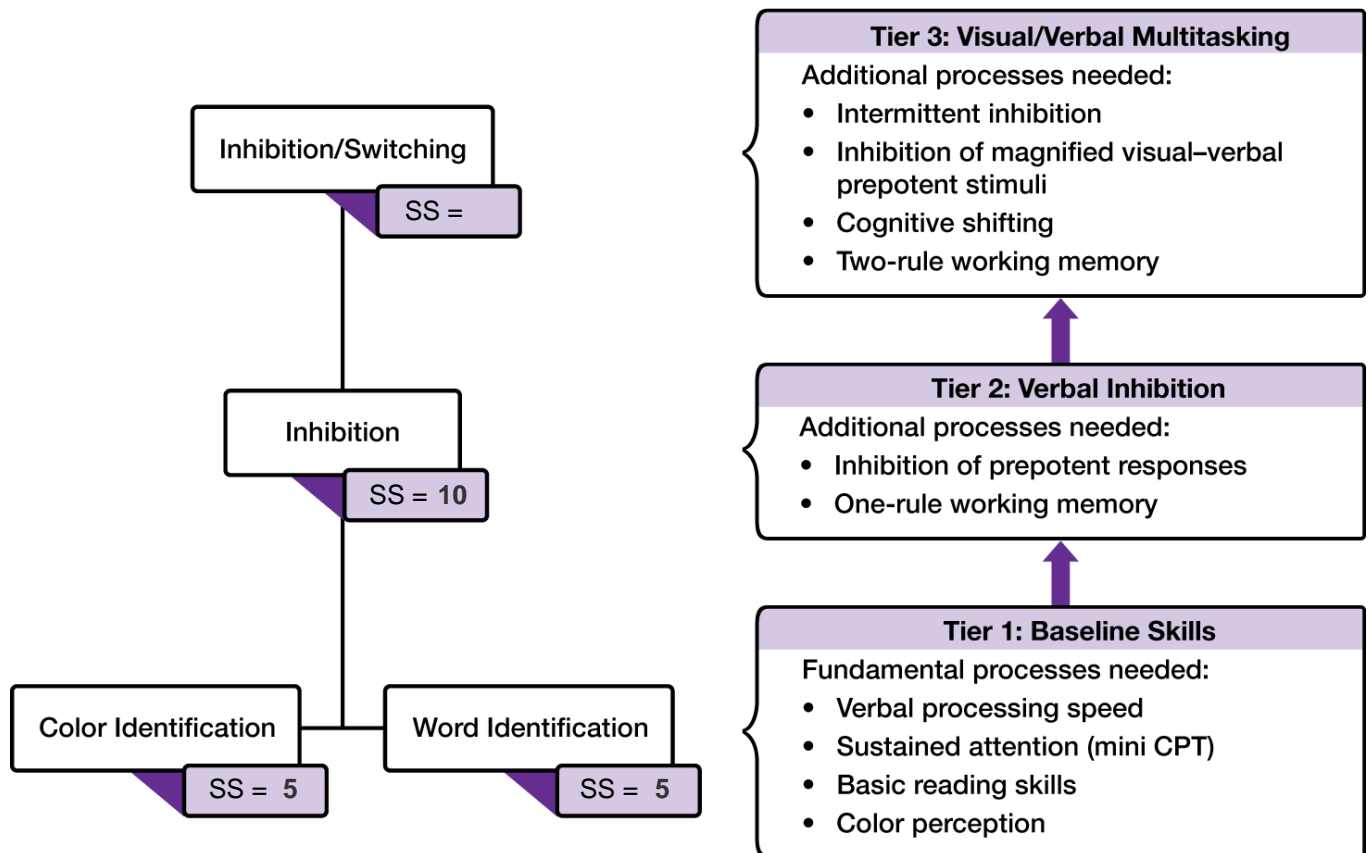
Time scores	Raw score	Age scaled score	Age percentile rank/ base rate
Mean Pure Response Time (Correct and Incorrect)	1.9	9	37
Standard Deviation of Mean Pure Response Time (Correct and Incorrect)	0.9		26–50
Mean Correct Response Time	1.8		51–75
Mean Incorrect Response Time	2.6		3–9

Combined Condition Process Scores

Learning scores	Raw score	Age scaled score	Age percentile rank
Combined Color and Word Identification Net Correct Responses First-Half	43	7	16
Combined Color and Word Identification Net Correct Responses Second-Half	21	3	1

Contrast score	Score 1	Score 2	Contrast scaled score
Combined Identification First-Half vs. Second-Half Net Correct Responses	7	3	4

Hierarchical Processes Flowchart



Raw Scores

Response Summary

	C1. Color Identification	C2. Word Identification	C3. Inhibition	C4. Inhibition/Switching
Total Correct Responses	38	38	62	-
Total Noninhibitory	5	7	1	-
Total Inhibitory Errors			1	-
Total Responses (Correct and Incorrect)	43	45	64	-

Response Bias Summary

Percent Selected (raw scores)	Left Box	Middle Box	Right Box
C1. Color Identification	35	33	33
C2. Word Identification	31	33	36
C3. Inhibition	34	33	33
C4. Inhibition/Switching	-	-	-

Scored Item Responses

Color Identification

Trial	Time	Score	Error type	Trial	Time	Score	Error type	Trial	Time	Score	Error type
1	0.7	1	-	31	2.0	1	-	61	-	-	-
2	1.0	1	-	32	1.1	0	N	62	-	-	-
3	0.9	1	-	33	1.2	0	N	63	-	-	-
4	0.8	1	-	34	1.1	0	N	64	-	-	-
5	0.9	1	-	35	2.9	1	-	65	-	-	-
6	1.0	1	-	36	1.9	1	-	66	-	-	-
7	0.9	1	-	37	2.3	1	-	67	-	-	-
8	0.7	1	-	38	1.3	1	-	68	-	-	-
9	1.0	1	-	39	1.2	1	-	69	-	-	-
10	0.8	0	N	40	1.8	1	-	70	-	-	-
11	1.9	1	-	41	1.4	1	-	71	-	-	-
12	1.1	1	-	42	1.3	1	-	72	-	-	-
13	1.2	1	-	43	2.4	1	-	73	-	-	-
14	1.2	1	-	44	-	-	-	74	-	-	-
15	1.8	1	-	45	-	-	-	75	-	-	-
16	1.3	1	-	46	-	-	-	76	-	-	-
17	1.3	1	-	47	-	-	-	77	-	-	-
18	1.0	1	-	48	-	-	-	78	-	-	-
19	1.5	1	-	49	-	-	-	79	-	-	-
20	0.9	1	-	50	-	-	-	80	-	-	-
21	1.0	1	-	51	-	-	-	81	-	-	-
22	1.7	1	-	52	-	-	-	82	-	-	-
23	0.9	1	-	53	-	-	-	83	-	-	-
24	1.6	1	-	54	-	-	-	84	-	-	-
25	1.6	1	-	55	-	-	-	85	-	-	-
26	1.5	1	-	56	-	-	-	86	-	-	-
27	1.3	1	-	57	-	-	-	87	-	-	-
28	1.1	1	-	58	-	-	-	88	-	-	-
29	1.0	1	-	59	-	-	-	89	-	-	-
30	0.9	0	N	60	-	-	-	90	-	-	-

N = noninhibitory error

Word Identification

Trial	Time	Score	Error type	Trial	Time	Score	Error type	Trial	Time	Score	Error type
1	1.7	1	-	31	1.1	1	-	61	-	-	-
2	1.2	1	-	32	1.4	1	-	62	-	-	-
3	0.8	1	-	33	1.4	1	-	63	-	-	-
4	1.7	1	-	34	1.3	1	-	64	-	-	-
5	1.3	1	-	35	1.2	1	-	65	-	-	-
6	1.1	1	-	36	1.2	1	-	66	-	-	-
7	1.4	1	-	37	1.2	1	-	67	-	-	-
8	1.0	1	-	38	1.7	0	N	68	-	-	-
9	2.2	1	-	39	1.6	1	-	69	-	-	-
10	1.1	1	-	40	1.6	0	N	70	-	-	-
11	1.4	1	-	41	1.1	0	N	71	-	-	-
12	1.2	1	-	42	1.0	0	N	72	-	-	-
13	1.2	1	-	43	0.8	0	N	73	-	-	-
14	1.1	1	-	44	0.7	0	N	74	-	-	-
15	1.2	1	-	45	0.6	1	-	75	-	-	-
16	1.3	1	-	46	-	-	-	76	-	-	-
17	0.9	1	-	47	-	-	-	77	-	-	-
18	1.7	1	-	48	-	-	-	78	-	-	-
19	1.0	1	-	49	-	-	-	79	-	-	-
20	1.3	1	-	50	-	-	-	80	-	-	-
21	2.1	1	-	51	-	-	-	81	-	-	-
22	1.0	1	-	52	-	-	-	82	-	-	-
23	1.1	1	-	53	-	-	-	83	-	-	-
24	1.5	1	-	54	-	-	-	84	-	-	-
25	1.2	1	-	55	-	-	-	85	-	-	-
26	1.5	0	N	56	-	-	-	86	-	-	-
27	2.1	1	-	57	-	-	-	87	-	-	-
28	1.0	1	-	58	-	-	-	88	-	-	-
29	1.0	1	-	59	-	-	-	89	-	-	-
30	1.3	1	-	60	-	-	-	90	-	-	-

N = noninhibitory error

Inhibition

Trial	Time	Score	Error type	Trial	Time	Score	Error type	Trial	Time	Score	Error type
1	1.3	1	-	31	5.7	1	-	61	1.8	1	-
2	1.5	1	-	32	2.4	1	-	62	1.9	1	-
3	0.9	1	-	33	1.9	1	-	63	1.4	1	-
4	0.9	1	-	34	2.7	1	-	64	1.2	1	-
5	2.3	1	-	35	1.9	1	-	65	-	-	-
6	1.0	1	-	36	1.3	1	-	66	-	-	-
7	1.6	1	-	37	1.4	1	-	67	-	-	-
8	1.7	1	-	38	2.4	1	-	68	-	-	-
9	1.3	1	-	39	2.6	0	N	69	-	-	-
10	1.2	1	-	40	2.5	0	I	70	-	-	-
11	1.1	1	-	41	3.6	1	-	71	-	-	-
12	1.2	1	-	42	2.0	1	-	72	-	-	-
13	1.1	1	-	43	2.1	1	-	73	-	-	-
14	1.2	1	-	44	1.9	1	-	74	-	-	-
15	1.1	1	-	45	1.4	1	-	75	-	-	-
16	1.0	1	-	46	1.6	1	-	76	-	-	-
17	1.2	1	-	47	1.3	1	-	77	-	-	-
18	1.9	1	-	48	1.3	1	-	78	-	-	-
19	3.4	1	-	49	1.3	1	-	79	-	-	-
20	1.6	1	-	50	1.4	1	-	80	-	-	-
21	1.6	1	-	51	1.1	1	-	81	-	-	-
22	1.0	1	-	52	1.1	1	-	82	-	-	-
23	1.1	1	-	53	1.0	1	-	83	-	-	-
24	1.9	1	-	54	1.2	1	-	84	-	-	-
25	3.1	1	-	55	1.6	1	-	85	-	-	-
26	1.7	1	-	56	2.1	1	-	86	-	-	-
27	4.5	1	-	57	1.3	1	-	87	-	-	-
28	4.8	1	-	58	2.3	1	-	88	-	-	-
29	2.7	1	-	59	2.4	1	-	89	-	-	-
30	0.9	1	-	60	1.7	1	-	90	-	-	-

I = inhibitory error; N = noninhibitory error

Inhibition (continued)

Trial	Time	Score	Error type	Trial	Time	Score	Error type	Trial	Time	Score	Error type
91	-	-	-	111	-	-	-	131	-	-	-
92	-	-	-	112	-	-	-	132	-	-	-
93	-	-	-	113	-	-	-	133	-	-	-
94	-	-	-	114	-	-	-	134	-	-	-
95	-	-	-	115	-	-	-	135	-	-	-
96	-	-	-	116	-	-	-	136	-	-	-
97	-	-	-	117	-	-	-	137	-	-	-
98	-	-	-	118	-	-	-	138	-	-	-
99	-	-	-	119	-	-	-	139	-	-	-
100	-	-	-	120	-	-	-	140	-	-	-
101	-	-	-	121	-	-	-	141	-	-	-
102	-	-	-	122	-	-	-	142	-	-	-
103	-	-	-	123	-	-	-	143	-	-	-
104	-	-	-	124	-	-	-	144	-	-	-
105	-	-	-	125	-	-	-	145	-	-	-
106	-	-	-	126	-	-	-	146	-	-	-
107	-	-	-	127	-	-	-	147	-	-	-
108	-	-	-	128	-	-	-	148	-	-	-
109	-	-	-	129	-	-	-	149	-	-	-
110	-	-	-	130	-	-	-	150	-	-	-

I = inhibitory error; N = noninhibitory error

Inhibition/Switching

Trial	Time	Score	Error type	Trial	Time	Score	Error type	Trial	Time	Score	Error type
1	-	-	-	31	-	-	-	61	-	-	-
2	-	-	-	32	-	-	-	62	-	-	-
3	-	-	-	33	-	-	-	63	-	-	-
4	-	-	-	34	-	-	-	64	-	-	-
5	-	-	-	35	-	-	-	65	-	-	-
6	-	-	-	36	-	-	-	66	-	-	-
7	-	-	-	37	-	-	-	67	-	-	-
8	-	-	-	38	-	-	-	68	-	-	-
9	-	-	-	39	-	-	-	69	-	-	-
10	-	-	-	40	-	-	-	70	-	-	-
11	-	-	-	41	-	-	-	71	-	-	-
12	-	-	-	42	-	-	-	72	-	-	-
13	-	-	-	43	-	-	-	73	-	-	-
14	-	-	-	44	-	-	-	74	-	-	-
15	-	-	-	45	-	-	-	75	-	-	-
16	-	-	-	46	-	-	-	76	-	-	-
17	-	-	-	47	-	-	-	77	-	-	-
18	-	-	-	48	-	-	-	78	-	-	-
19	-	-	-	49	-	-	-	79	-	-	-
20	-	-	-	50	-	-	-	80	-	-	-
21	-	-	-	51	-	-	-	81	-	-	-
22	-	-	-	52	-	-	-	82	-	-	-
23	-	-	-	53	-	-	-	83	-	-	-
24	-	-	-	54	-	-	-	84	-	-	-
25	-	-	-	55	-	-	-	85	-	-	-
26	-	-	-	56	-	-	-	86	-	-	-
27	-	-	-	57	-	-	-	87	-	-	-
28	-	-	-	58	-	-	-	88	-	-	-
29	-	-	-	59	-	-	-	89	-	-	-
30	-	-	-	60	-	-	-	90	-	-	-

I = inhibitory error; N = noninhibitory error

Inhibition/Switching (continued)

Trial	Time	Score	Error type	Trial	Time	Score	Error type	Trial	Time	Score	Error type
91	-	-	-	111	-	-	-	131	-	-	-
92	-	-	-	112	-	-	-	132	-	-	-
93	-	-	-	113	-	-	-	133	-	-	-
94	-	-	-	114	-	-	-	134	-	-	-
95	-	-	-	115	-	-	-	135	-	-	-
96	-	-	-	116	-	-	-	136	-	-	-
97	-	-	-	117	-	-	-	137	-	-	-
98	-	-	-	118	-	-	-	138	-	-	-
99	-	-	-	119	-	-	-	139	-	-	-
100	-	-	-	120	-	-	-	140	-	-	-
101	-	-	-	121	-	-	-	141	-	-	-
102	-	-	-	122	-	-	-	142	-	-	-
103	-	-	-	123	-	-	-	143	-	-	-
104	-	-	-	124	-	-	-	144	-	-	-
105	-	-	-	125	-	-	-	145	-	-	-
106	-	-	-	126	-	-	-	146	-	-	-
107	-	-	-	127	-	-	-	147	-	-	-
108	-	-	-	128	-	-	-	148	-	-	-
109	-	-	-	129	-	-	-	149	-	-	-
110	-	-	-	130	-	-	-	150	-	-	-

I = inhibitory error; N = noninhibitory error

D-KEFS Advanced Tower Test

Core Scores

Global score	Raw score	Age scaled score	Age percentile rank
Global Performance Score	13	10	50

Process Scores

Accuracy scores	Raw score	Age base rate
Global Performance Score Solid Items	7	26-50
Global Performance Score Striped Items	6	51-75

Error scores	Raw score	Age base rate
Mean Rule Violations per Item	2.8	10–16
Total 0-Back Moves	8	>75
Total 1-Back Moves	2	51–75
Total 2-Back Moves	0	26–50

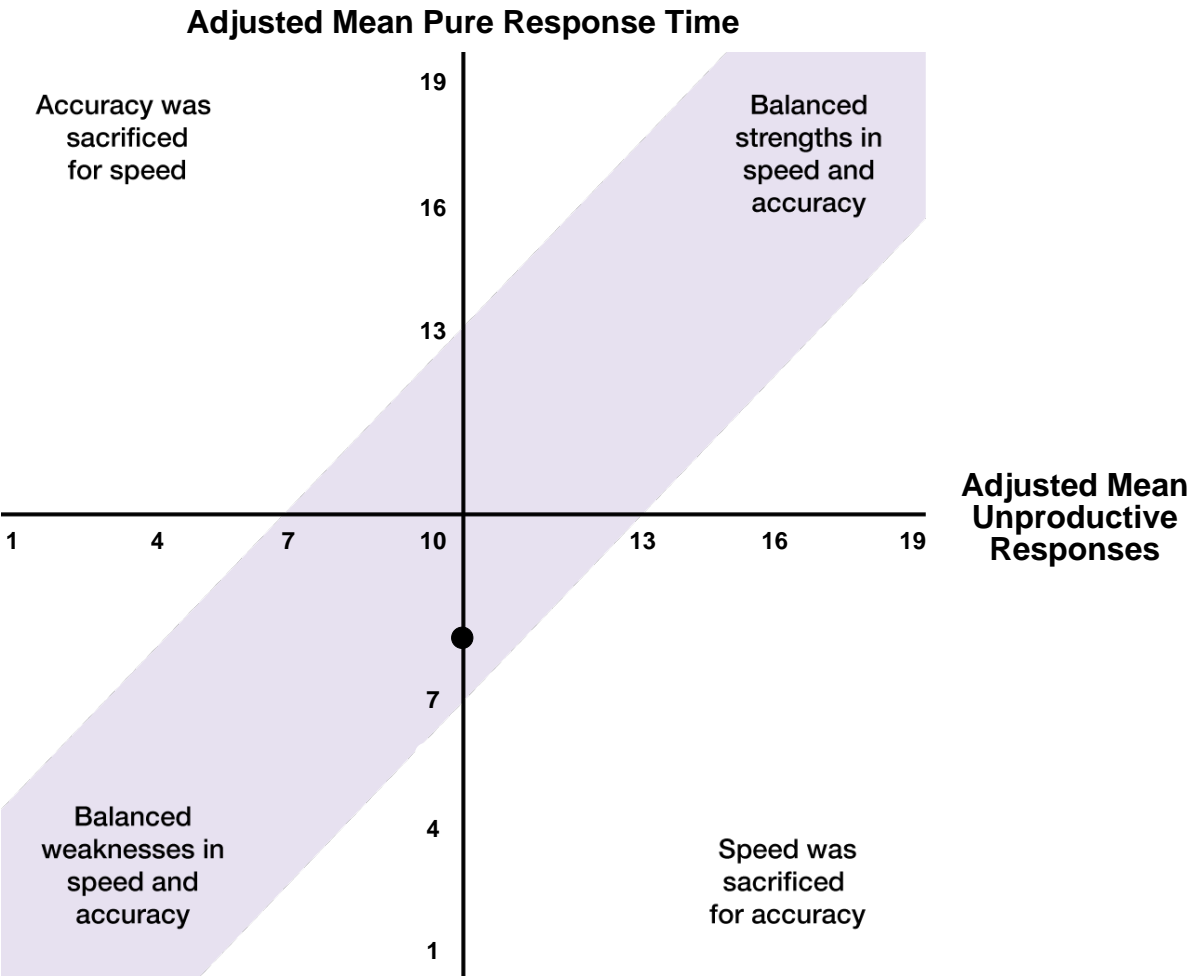
Scaled scores	Raw score	Age scaled score	Age percentile rank
Adjusted Mean Pure Response Time	2.8	8	25
Adjusted Mean Unproductive Responses	3.5	10	50

Contrast Scores

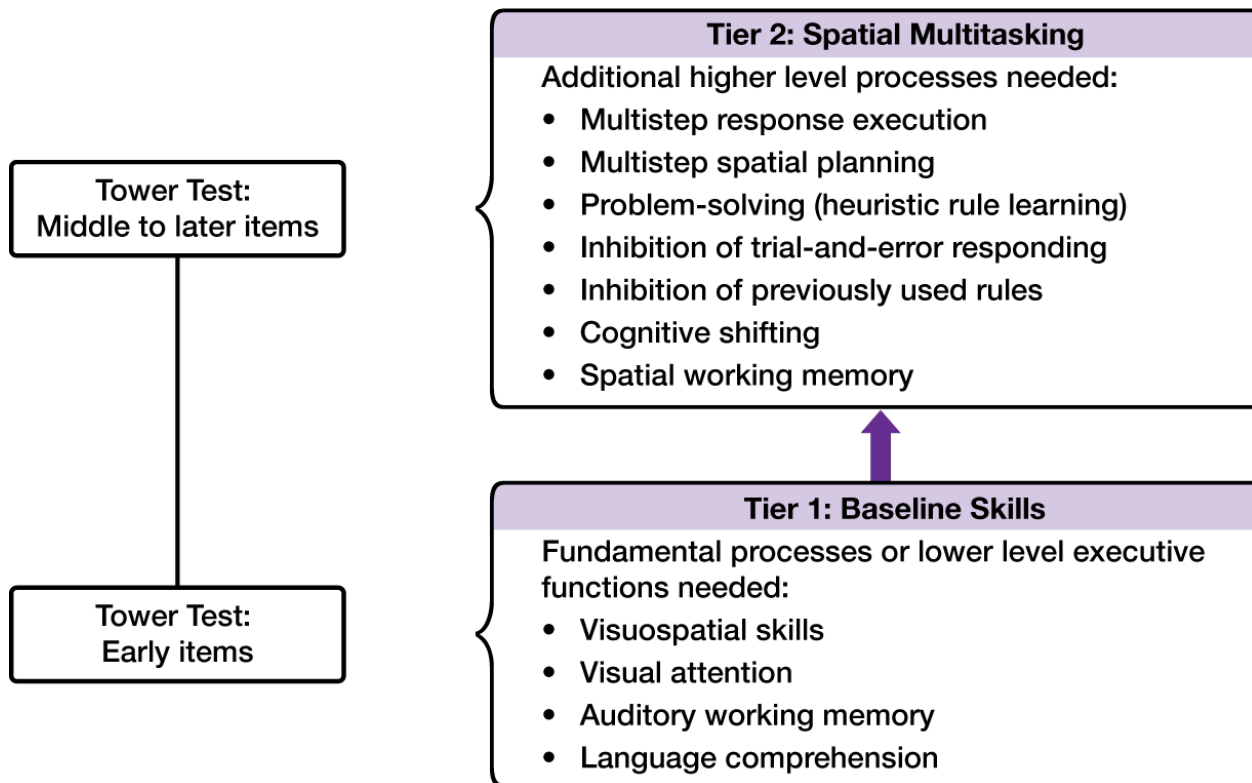
Score	Score 1	Score 2	Contrast base rate
Global Performance Score Solid vs. Striped Items	26–50	51–75	51–75

Speed–Accuracy Tradeoff Analysis

Score	Score 1	Score 2	Standard/scaled score/ contrast scaled score
Y-Axis: Adjusted Mean Pure Response Time standard score			8
X-Axis: Adjusted Mean Unproductive Responses scaled score			10
Adjusted Mean Pure Response Speed–Accuracy Tradeoff contrast scaled score	8	10	10



Hierarchical Processes Flowchart



Raw Scores

Additional scores	Raw score
Optimal First Move	6
Total Two-Chip Errors	19
Total Size-Placement Errors	15

Scored Item Response Summary

Item	Striped or solid	Score	Optimal First Move	Total Moves	Total Two-Chip Errors	Total Size-Placement Errors	Completion Time
1	Solid	2	1	2	0	0	4.0
2	Solid	2	0	4	0	0	13.0
3	Striped	2	1	3	0	0	4.0
4	Striped	2	1	3	0	0	13.0
5	Solid	2	1	4	0	0	6.0
6	Striped	1	1	8	1	1	16.0
7	Solid	0	0	9	0	3	33.0
8	Solid	1	0	8	0	0	24.0
9	Striped	1	0	11	1	1	41.0
10	Solid	0	1	14	2	3	60.0
11	Solid	0	0	15	7	0	74.0
12	Striped	0	0	30	8	7	141.0
13	Striped	-	-	-	-	-	-
14	Solid	-	-	-	-	-	-
15	Solid	-	-	-	-	-	-
16	Striped	-	-	-	-	-	-
17	Solid	-	-	-	-	-	-

D-KEFS Advanced Social Sorting Test

Core Score

Global score	Raw score	Age standard score	Age percentile rank
Global Performance Index	35	91	27

Process Scaled Scores

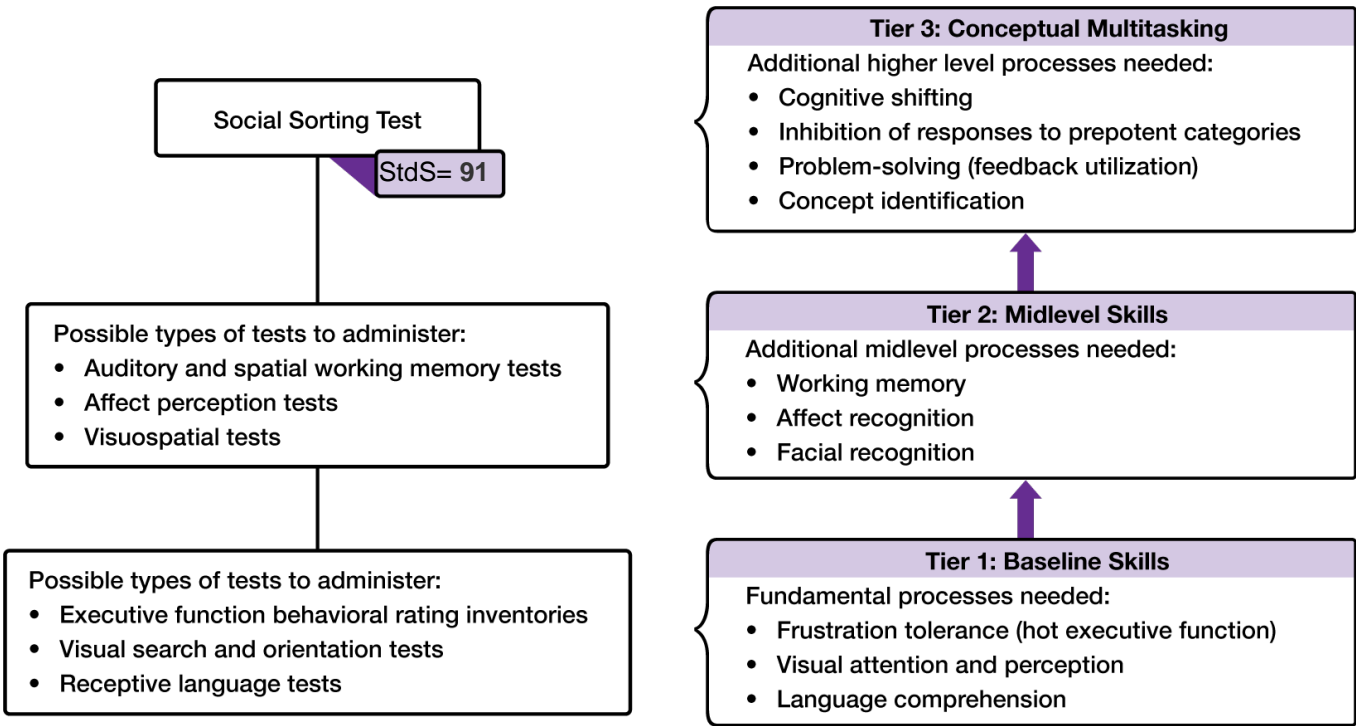
Global scores	Raw score	Age scaled score	Age percentile rank
Total Number of Perseverative Responses	17	12	75
Percent Perseverative Responses	13	13	84
Total Number of Perseverative Errors	16	11	63
Percent Perseverative Errors	13	12	75
Total Number of Nonperseverative Errors	42	5	5
Percent Nonperseverative Errors	33	5	5
Total Number of Errors	58	8	25
Percent Correct Responses	55	8	25
Total Number of Conceptual Level Responses	50	7	16
Percent Conceptual Level Responses	39	7	16

Global score	Raw score	Age base rate
Number of Categories Completed	3	26–50

Base Rate Process Scores

Performance scores	Raw score	Age base rate
Trials to Complete First Category	38	17–25
Failure to Maintain Set	2	26–50
Total Number of Other Responses	27	10–16
Percent Other Responses	21	3–9
Total Number of Derailment Errors	1	26–50
Percent Derailment Errors	1	26–50

Hierarchical Processes Flowchart



Raw Scores

Accuracy scores

	Raw score
Total Number of Correct Responses	70
Number of Sorts Administered	128
Affect Matching Total	-

Item Response Summary

Category	Number of Responses	Number of Correct Responses	Number of Errors	Number of Perseverative Errors	Number of Nonperseverative Errors	Number of Other Responses
1	38	29	9	2	7	5
2	30	16	14	8	6	6
3	26	18	8	1	7	4
4	34	7	27	5	22	12
5	-	-	-	-	-	-
6	-	-	-	-	-	-
All	128	70	58	16	42	27

Note. Categories with at least 10 sorts are included.

Scored Item Responses

Item	Response	Item	Response	Item	Response	Item	Response
1	P	33	PH	65	HE	97	E
2	E	34	PH	66	H	98	E
3	O	35	PH	67	H	99	PH
4	PE	36	P	68	H	100	H
5	PH	37	PH	69	PH	101	O
6	PH	38	PE	70	PH	102	H
7	PE	39	P	71	O	103	H
8	P	40	H	72	E	104	O
9	P	41	PHE	73	H	105	O
10	P	42	P	74	O	106	H
11	O	43	P	75	P	107	P
12	PH	44	PE	76	O	108	O
13	E	45	P	77	E	109	H
14	P	46	PH	78	E	110	O
15	P	47	PH	79	E	111	O
16	PHE	48	O	80	PHE	112	O
17	O	49	O	81	HE	113	PE
18	PE	50	P	82	PE	114	H
19	E	51	O	83	E	115	P
20	P	52	O	84	O	116	O
21	O	53	P	85	HE	117	H
22	P	54	P	86	HE	118	O
23	P	55	H	87	HE	119	O
24	P	56	O	88	E	120	O
25	H	57	H	89	E	121	H
26	P	58	O	90	E	122	O
27	P	59	HE	91	HE	123	P
28	O	60	H	92	HE	124	H
29	PHE	61	H	93	PHE	125	H
30	PE	62	PHE	94	PE	126	PHE
31	P	63	PH	95	HE	127	E
32	PE	64	H	96	PE	128	E

P = person; H = hat; E = emotion; O = other

Affect Matching Responses

Item	Response
1	-
2	-
3	-
4	-
5	-
6	-
7	-
8	-
9	-
10	-
11	-
12	-

End of Report